

## 10150PFXFNS Epic Finesse

Wilflex™ Epic Finesse is a non-phthalate plastisol additive designed to soften and extend Epic general purpose and specialty inks.

### Highlights

- ▶ Finesse may be added to Epic Mixing Base, Epic MX, Epic Process Inks, and most Epic Specialty inks to improve printability and soften hand in amounts up to 20%.
- ▶ Finesse may be added to Epic Special Effects Clear, Epic Stretch Base, Epic NuPuff and Wilflex White inks (excluding low-bleed inks) in amounts up to 10% by weight.

### Printing Tips

- ▶ For best results, follow the recommended Printing Parameters for the specific ink.

### Compliance

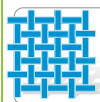
- ▶ Non-phthalate.
- ▶ For individual compliance certifications, please visit [www.wilflex.com/compliance](http://www.wilflex.com/compliance).

### Precautions

- ▶ Perform fusion tests before production. Failure to cure ink properly may result in poor wash fastness, inferior adhesion and unacceptable durability. Ink gel and cure temperatures should be measured using a Thermoprobe placed directly in the wet ink film and verified on the production run substrate(s) and production equipment. It is the responsibility of the printer to determine that the correct ink has been selected for a specific substrate and the application processes meet your customer's standards or specifications.
- ▶ Additions greater than those specified will reduce opacity and/or ink performance.
- ▶ Finesse is NOT recommended for Transflex or One-Step Nylon inks. Addition of Epic Finesse will impede split on Transflex inks and will diminish adhesion to nylon.
- ▶ Stir plastisols before printing.
- ▶ Do not dry clean, bleach or iron printed area.
- ▶ NON-CONTAMINATION OF EPIC INKS: Do not add or mix non-Epic inks, additives or extenders with Epic inks. All buckets, palette knives, stirring apparatus, squeegees, flood bars and screens must be cleaned properly and free of phthalates and pvc containing inks. Non-phthalate emulsions and pallet adhesives must be used. Failure to follow these precautions may cause phthalate contamination in violation of consumer protection laws and regulations.
- ▶ Any application not referred in this product information bulletin should be pre-tested or consultation sought with Wilflex Technical Services Department prior to printing.
- ▶ Email: [techserviceswilflex@polyone.com](mailto:techserviceswilflex@polyone.com)



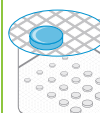
**Fabric Types**  
See Relevant PIB



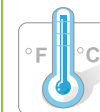
**Mesh**  
Counts: See Relevant PIB  
Tension: See Relevant PIB



**Squeegee**  
Durometer: See Relevant PIB  
Edge: See Relevant PIB  
Stroke: See Relevant PIB  
\*Do not use excess squeegee pressure.



**Non-Phthalate Stencil**  
Direct: See Relevant PIB  
Capillary/Thick Film: See Relevant PIB  
Off Contact: See Relevant PIB



**Flash & Cure Temperatures**  
Flash: 160°F (70°C)  
Cure: 320°F (160°C)



**Pigment Loading**  
EQ: See Relevant PIB  
MX: See Relevant PIB  
PC: See Relevant PIB  
\*All percentages listed at % by weight.



**Epic Additives**  
Extender: N/A  
Reducer: See Highlights  
\*All percentages listed at % by weight.



**Storage**  
65-90°F (18-32°C)  
Avoid direct sunlight.  
Use within one year of receipt.



**Clean Up**  
Ink degradant or press wash.



**Health & Safety**  
MSDS: [www.polyone.com](http://www.polyone.com) or  
Contact your local CSR.